

SECTION CORNER - O.D.O.T. D-22-498
 FOUND AND ACCEPTED A #4 BAR WITH "CA 980" CAP.
 LOCATION IS IN AGREEMENT WITH OKLAHOMA CERTIFIED
 CORNER RECORDS FILED IN 2004 AND IS IN HARMONY
 WITH EXISTING IMPROVEMENTS. THREE OF THE
 REFERENCE MONUMENTS WERE FOUND AND VERIFIED.

SECTION CORNER - O.D.O.T. D-22-499
 FOUND AND ACCEPTED A #4 BAR WITH "CA 980" CAP.
 LOCATION IS IN AGREEMENT WITH OKLAHOMA CERTIFIED
 CORNER RECORDS FILED IN 2004 AND IS IN HARMONY
 WITH EXISTING IMPROVEMENTS. TWO OF THE REFERENCE
 MONUMENTS WERE FOUND AND VERIFIED.

SECTION CORNER - O.D.O.T. D-22-500
 FOUND AND ACCEPTED A #4 BAR. LOCATION IS IN
 AGREEMENT WITH OKLAHOMA CERTIFIED CORNER
 RECORDS FILED IN 2010. THE REFERENCE MONUMENTS
 WERE FOUND AND VERIFIED. LOCATION SEEMS TO BE IN
 HARMONY WITH SURROUNDING IMPROVEMENTS. THE
 MONUMENT REFERENCED IN OKLAHOMA CERTIFIED
 CORNER RECORDS FILED IN 2004 WAS NOT FOUND.

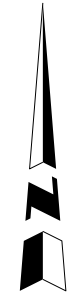
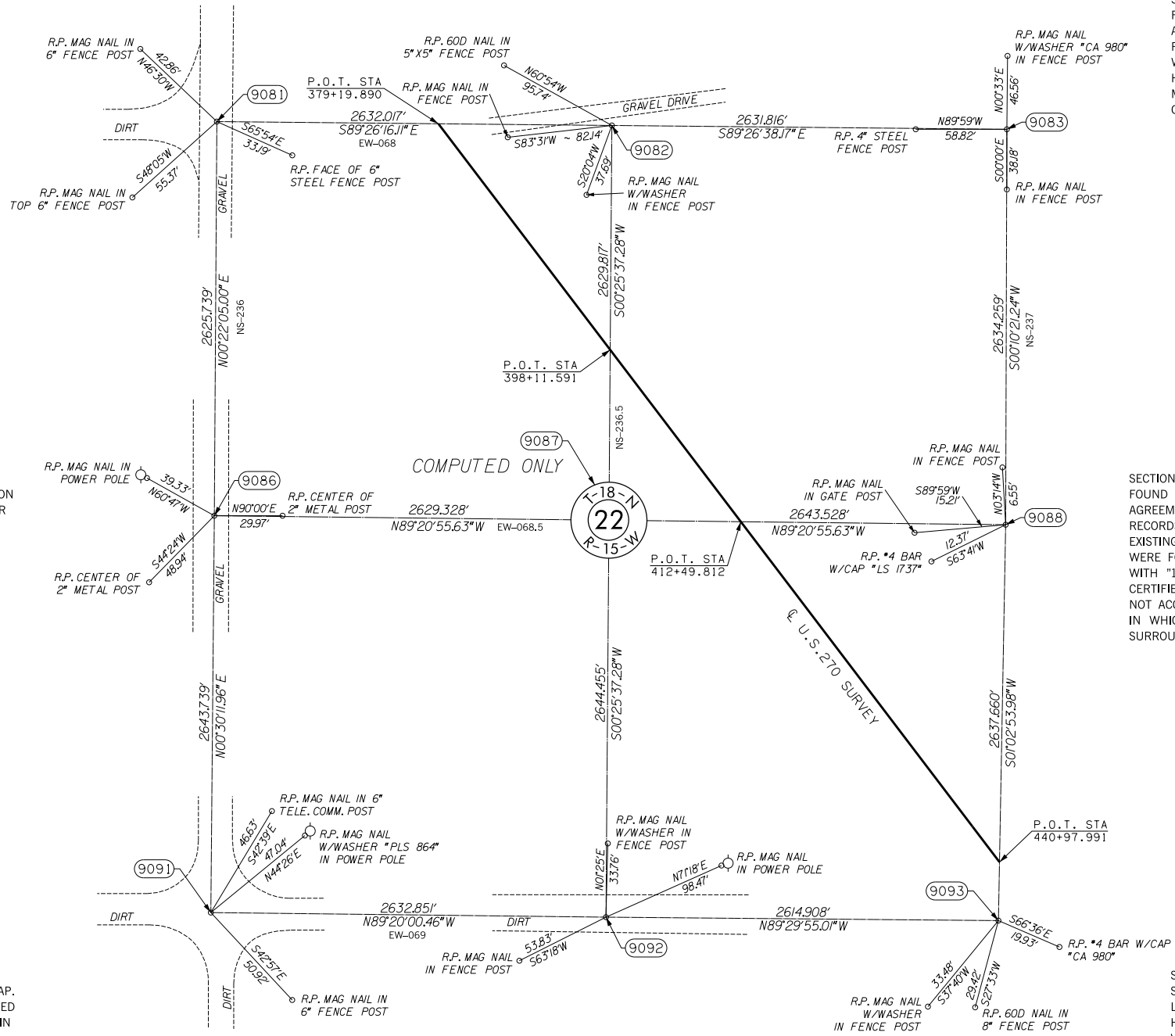
SECTION CORNER - O.D.O.T. D-22-503
 FOUND AND ACCEPTED A #4 BAR WITH CAP. LOCATION
 IS IN AGREEMENT WITH OKLAHOMA CERTIFIED CORNER
 RECORDS FILED IN 2001 AND IS IN HARMONY WITH
 EXISTING IMPROVEMENTS. TWO OF THE REFERENCE
 MONUMENTS WERE FOUND AND VERIFIED.

SECTION CORNER - O.D.O.T. D-22-504
 FOUND AND ACCEPTED #5 BAR. LOCATION IS IN
 AGREEMENT WITH OKLAHOMA CERTIFIED CORNER
 RECORDS FILED IN 2001 AND IS IN HARMONY WITH
 EXISTING IMPROVEMENTS. THREE OF THE REFERENCES
 WERE FOUND AND VERIFIED. ALSO FOUND A #4 BAR
 WITH "1737 OK" CAP REFERENCED IN OKLAHOMA
 CERTIFIED CORNER RECORDS FILED IN 2010 BUT DID
 NOT ACCEPT THIS LOCATION BECAUSE OF THE METHOD
 IN WHICH IT WAS SET AND IT DID NOT FIT
 SURROUNDING IMPROVEMENTS.

SECTION CORNER - O.D.O.T. D-22-506
 FOUND AND ACCEPTED A #3 BAR WITH "RLS 864" CAP.
 LOCATION IS IN AGREEMENT WITH OKLAHOMA CERTIFIED
 CORNER RECORDS FILED IN 2010 AND 2000 AND IS IN
 HARMONY WITH EXISTING IMPROVEMENTS. THE
 REFERENCE MONUMENTS WERE FOUND AND VERIFIED.

SECTION CORNER - O.D.O.T. D-22-507
 FOUND AND ACCEPTED A #3 BAR. LOCATION IS IN
 AGREEMENT WITH OKLAHOMA CERTIFIED CORNER
 RECORDS FILED IN 2010 AND 2000 AND IS IN
 HARMONY WITH EXISTING IMPROVEMENTS. THE
 REFERENCE MONUMENTS WERE FOUND AND VERIFIED.

SECTION CORNER - O.D.O.T. D-22-508
 SET A #4 BAR WITH "CA 2054" CAP FOR CORNER.
 LOCATION WAS RE-ESTABLISHED BY USING EXISTING
 HIGHWAY PLANS AND SPLITTING FENCES RUNNING EAST
 WEST. ALSO FOUND A #4 BAR WITH "CA 980" CAP
 REFERENCED IN OKLAHOMA CERTIFIED CORNER RECORDS
 FILED IN 2004 BUT DID NOT ACCEPT THIS LOCATION
 BECAUSE IT DID NOT FIT EXISTING HIGHWAY PLANS.



SCALE:
 1" = 500'

NOTE: REFERENCE'S SHOWN ARE NOT TO SCALE.

OKLAHOMA DEPARTMENT OF TRANSPORTATION SURVEY DIVISION			
PLS	KH		
DRAWN	CF,SK		
CHECKED	KH		
APPROVED	KH		
CREW	JH,SA,BH,DR	SWO 4600 (1)	PROJECT NO. 17671(34) SHEET NO. S37